

DIRECTIONS TO ALL 7 STOPS ON THE TRAIL

BROOKS HILL WINERY

I-65 to Exit 121 – west 3 miles on Hwy. 1526 to entrance on right.

MILLANOVA WINERY

I-65 to Exit 117 – east 6.5 miles on Hwy. 44, then left onto Bethel Church Road – 1 mile, then left onto Gentry Lane – 1/2 mile to entrance on right.

WIGHT MEYER WINERY

I-65 to Exit 116 – east 4.5 miles on Hwy. 480, then left onto Pine Creek Trail – 1.3 miles, then right onto Meyer Drive – follow to end.

FOREST EDGE WINERY

I-65 to Exit 112 – east 1.3 miles on Hwy. 245 to entrance on left.

JAMES B. BEAM AMERICAN OUTPOST

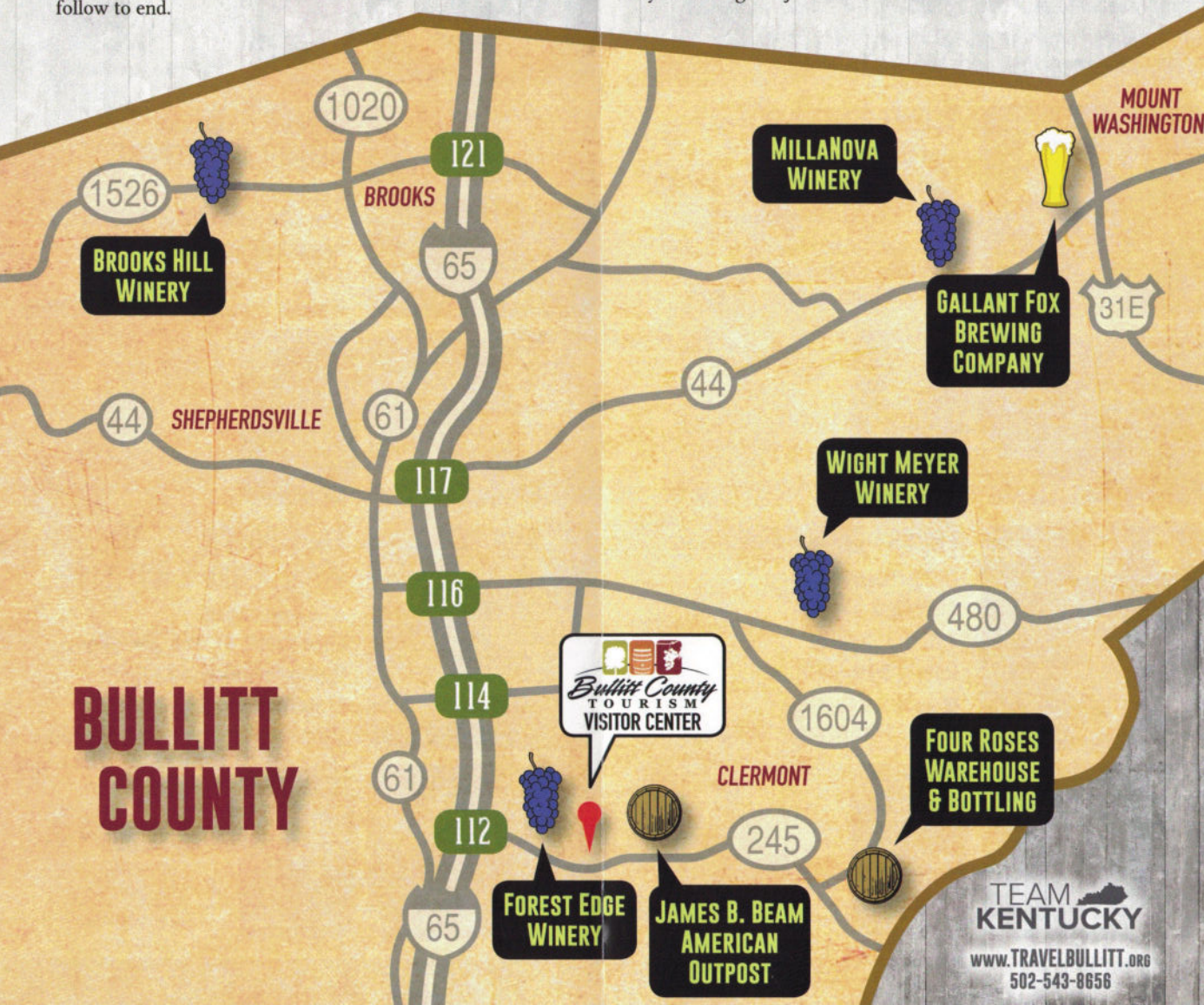
I-65 to Exit 112 – east 1.5 miles on Hwy. 245 to entrance on left.

FOUR ROSES WAREHOUSE & BOTTLING

I-65 to Exit 112 – east 5.5 miles on Hwy. 245, then left onto Hwy. 1604 – 1/2 mile to entrance on right.

GALLANT FOX BREWING COMPANY

I-65 to Exit 117 – east 10 miles on Hwy. 44, then left onto Hwy. 31E at light – just 300 ft. to entrance on left.



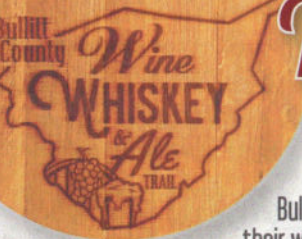
Bullitt County Wine & Ale Trail



JAMES B. BEAM AMERICAN OUTPOST
FOUR ROSES WAREHOUSE & BOTTLING
BROOKS HILL WINERY • FOREST EDGE WINERY
MILLANOVA WINERY • WIGHT MEYER WINERY
GALLANT FOX BREWING COMPANY

TEAM KENTUCKY

www.TRAVELBULLITT.org
502-543-8656



Take the time to enjoy the unique experience of Bullitt County's four award-winning wineries, where you can truly taste the dedication and passion our wine makers have for their craft.

Our county is also home to the James B. Beam American Outpost and Four Roses Warehouse & Bottling. Come see how corn, rye and barley, combined with our area's natural limestone-filtered water, come together to create some of the best whiskey in the world.

Bullitt County's new Gallant Fox Brewing Company features the best in craft beer. Be sure to try their wide array of offerings, including the Golden Bullitt Lager.



SCAN ME

THERE ARE TWO WAYS TO COMPLETE THE WINE, WHISKEY & ALE TRAIL!

- 1 Visit all seven locations and have **THIS BROCHURE STAMPED** by a staff member - OR -
- 2 Scan the barcode at right to get the free **MOBILE DIGITAL PASSPORT** and follow the on-screen instructions for installing. Then, when you arrive at each of the seven locations, simply validate your visit by tapping the "Check In" button.

For your **Free Souvenir Glass** for completing the Trail, redeem your fully-validated brochure or digital passport at either the Bullitt County Visitor Center (2040 Clermont Rd) or Forest Edge Winery (1910 Clermont Rd) - both I-65 Exit 112, then east 1.5 miles.



BROOKS HILL WINERY

2746 Brooks Hill Road
Brooks, KY
502-957-7810
brookshillwinery.com
Mon-Fri 12-5pm
Sat 11am-6pm; Sun 1-6pm



WIGHT MEYER WINERY

340 Meyer Drive
Shepherdsville, KY 502-921-0267
wight-meyervineyards.com
Mon-Tue Closed
Wed-Thu 11am-6pm
Fri-Sat 11am-7pm; Sun 1-6pm



MILLANOVA WINERY

744 Gentry Lane
Mt. Washington, KY
502-664-8304
millanovawinery.com
Sun-Tue 1-6pm
Wed-Sat 12-6pm



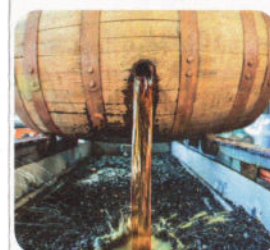
FOREST EDGE WINERY

1910 Clermont Road
Clermont, KY
1-855-355-WINE
forestedgewine.com
Mon-Thu 11am-6pm
Fri-Sat 11am-7pm; Sun 12-6pm



GALLANT FOX BREWING COMPANY

155 N. Bardstown Road
Mt. Washington, KY 502-751-3770
gallantfoxbrewing.com
Tue-Thu 11am-10pm
Fri-Sat 11am-11pm; Sun 11am-9pm



JAMES B. BEAM AMERICAN OUTPOST

526 Happy Hollow Road
Clermont, KY 502-215-2295
beamdistilling.com
Mon-Tue Closed
Wed-Sat 9am-5:30pm; Sun 12-4:30pm



FOUR ROSES WAREHOUSE & BOTTLING

624 Lotus Road
Cox's Creek, KY 502-543-2264
fourrosesbourbon.com
Mon-Tue Closed
Wed-Sat 9am-4pm; Sun 12-4pm



For more information visit www.TRAVELBULLITT.org or call 502-543-8656